

Traditional and luxurious Kyoto experiences at "Machiya" "Nishijin-Ichii" Japanese style House in Kyoto



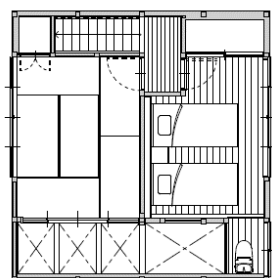
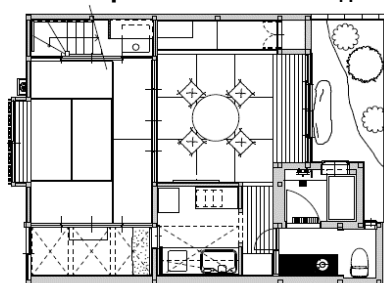
西障
いちい
上京区



• Nippon Express Travel is pleased to arrange "Machiya" house for your vocational rental in Kyoto. All the furniture was beautifully restored, but many parts of the house like glass sliding door, large beautiful beam and hidden stairway are still existed. Enjoy authentic and traditional Kyoto living, in conjunction with modern amenities and contemporary comforts. Machiya stay is perfect for the guests who want to experience a traditional Machiya stay and do not want the usual stay at Western style hotels.

Floor plan

1F



2F

Location	39-1 Suehiro-cho Kamigyo-ku, Kyoto
Capacity	2-4 people
Check-in/out	Check-in: From 3pm / Check-out: Until 10am
Parking	N/A (Please park at public parking near the Machiya.)
Floor plan	1st Floor: Entrance, 2 x Japanese Style Rooms, Cypress bath tub and Toilet 2nd floor: Bed Room, Japanese Style Room and Toilet
Bedding	1 x Twin Bed. (In case of more than 3 people, we will set up Japanese style Futon bedding.)
Facilities	Air conditioners, Free wi-fi, TV, Washing machine, Yukata, Kitchen facilities incl. Refrigerator, Microwave etc.

<ROOM CHARGE>

*Meals are NOT included. (JPY / per room, per night)

2018 5 May							2018 6 June							2018 7 July							2018 8 August						
日	月	火	水	木	金	土	日	月	火	水	木	金	土	日	月	火	水	木	金	土	日	月	火	水	木	金	土
		1 A	2 B	3 D	4 D	5 D						1 A	2 B	1 A	2 A	3 A	4 A	5 A	6 B	7 C				1 B	2 B	3 B	4 C
6 B	7 A	8 A	9 A	10A	11B	12C	3 A	4 A	5 A	6 A	7 A	8 A	9 B	8 B	9 A	10A	11A	12A	13B	14C	5 B	6 B	7 B	8 B	9 B	10C	11D
13B	14A	15A	16A	17A	18A	19B	10A	11A	12A	13A	14A	15A	16B	15D	16D	17C	18B	19B	20B	21C	12D	13C	14C	15C	16D	17C	18C
20A	21A	22A	23A	24A	25A	26B	17A	18A	19A	20A	21A	22A	23B	22C	23C	24C	25B	26B	27B	28C	19B	20B	21B	22B	23B	24B	25C
27A	28A	29A	30A	31A			24A	25A	26A	27A	28A	29A	30B	29B	30B	31B					26B	27A	28A	29A	30A	31A	

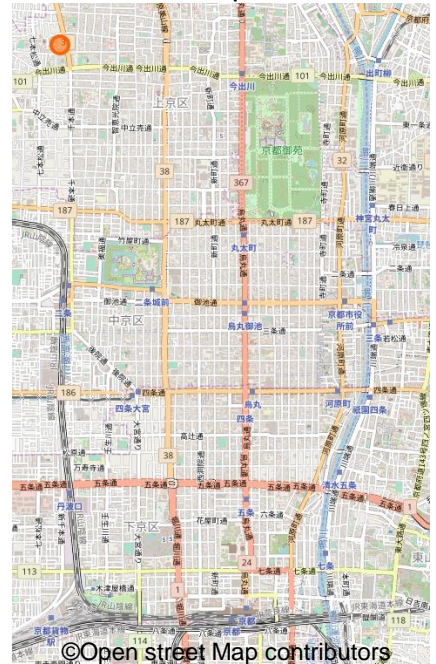
2018 9 September							2018 10 October							2018 11 November							2018 12 December						
日	月	火	水	木	金	土	日	月	火	水	木	金	土	日	月	火	水	木	金	土	日	月	火	水	木	金	土
						1 B		1 A	2 A	3 A	4 A	5 A	6 C					1 B	2 B	3 C							1 D
2 A	3 A	4 A	5 A	6 A	7 A	8 B	7 C	8 B	9 B	10B	11B	12B	13C	4 B	5 B	6 B	7 B	8 B	9 B	10C	2 D	3 C	4 C	5 C	6 C	7 C	8 D
9 A	10A	11A	12A	13A	14B	15D	14B	15B	16B	17B	18B	19B	20C	11B	12B	13B	14B	15B	16B	17C	9 C	10B	11B	12B	13B	14B	15C
16D	17B	18A	19A	20A	21B	22D	21B	22B	23B	24B	25B	26B	27C	18C	19C	20C	21C	22D	23D	24D	16B	17A	18A	19A	20A	21B	22D
23D	24B	25A	26A	27A	28A	29B	28B	29B	30B	31B				25D	26C	27C	28C	29C	30D		23D	24C	25B	26B	27C	28D	29D
30A																					30D	31D					

=Sat., Sun. and National Holidays

<map>

	Per room for 2 pax occupancy	Per room for 3 pax occupancy	Per room for 4 pax occupancy
A	26,000円	35,700円	43,200円
B	28,100円	38,900円	47,600円
C	36,800円	48,600円	60,500円
D	40,000円	55,100円	64,800円

(incl. tax)



***You'll be requested to check-in at the information desk near Kyoto station between 3 and 9 p.m.. We'll be pleased to arrange the orientation tour of Kyoto with supplementary cost.

***Cancellation Rates**

- (1) If cancellation notice arrives Nippon Express Travel no less than 21 days prior to the check-in date : N/A
- (2) If cancellation notice arrives Nippon Express Travel within 8 – 20 days prior to the check-in date : 20% of the tour price
- (3) If cancellation notice arrives Nippon Express Travel within 2 – 7 days prior to the check-in date : 30% of the tour price
- (4) If cancellation notice arrives Nippon Express Travel on the day immediately before the check-in date : 40% of the tour price
- (5) If cancellation notice arrives Nippon Express Travel on the check-in date or no cancellation notice is received. : 100% of the tour price